

Amenities

Both complexes offer a variety of great resources for residents including:

- Community Room for hosting resident and community events
- Tenant lounges with computers and TV's
- On-site coin-op laundry facilities
- Exercise equipment
- Free tenant library
- Sewing and Billiards Room* *Lincoln Manor Only*
- Health and wellness programming
- On site Resident Services staff
- Free weekly grocery store bus
- Handicap accessible gardens
- Off-street parking
- Monthly tenant association events
- 24 Hr. emergency maintenance staff
- Automated emergency alert system
- Emergency pull-cord system in all units
- Free transportation to Lincoln Senior Center



Board of Commissioners

Paul St. Germain - Chairman
William H. Peppes - Vice-Chair
Lois A. Bryant
John McLaughlin
Shilpa Naik
Norman Ricard
Edward Slattery

Executive Director
Claudette Kuligowski

**For inquiries or an application please
contact the Property Manager at
401-724-8910 ext. 212
Applications are also available online.**



Lincoln Housing Authority
10 Franklin Street
Lincoln, Rhode Island 02865
Phone: (401) 724-8910 Fax: (401) 723-1350
Please visit our website at
www.lincolnhousing.org



Lincoln Housing Authority
10 Franklin Street
Lincoln, Rhode Island 02865
(401) 724-8910

Quality Affordable Housing in the
Town of Lincoln, Rhode Island



Welcome to Lincoln Housing

Lincoln Housing Authority has been providing quality subsidized housing to disabled persons and those 62 years or older at our two locations for more than fifty years. Our Administrative Offices are located on-site at Lincoln Manor, providing residents with personalized and efficient service.

Our two beautifully landscaped locations, Lincoln Manor and Manville Manor, offer smoke-free housing only. Applicants are not able to select a specific complex, however, both locations offer a unique variety of amenities for residents and are conveniently located near parks, banks, local shops and restaurants.

We offer efficiency, studio, one and two bedroom apartments. Please note, to change from one style unit to another does require a doctor's note and medical documentation. For your safety, all apartments have grab bars in the bathroom and emergency pull cord systems in both the bathroom and bedroom areas.

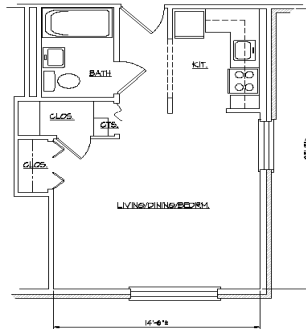
Certain pets under 20lbs. are permitted at both locations; such as dogs, cats, fish and birds. Lincoln Housing Authority does offer a Lincoln residency preference to those who live in Lincoln and those who are currently working in the town of Lincoln.

Your monthly rent is calculated as 30% of an individual's monthly, adjusted income and includes all utilities except telephone, internet, cable services and air conditioning.

Efficiency Apartment 0-Bed

Living/Dining/Bedroom Area, galley-style kitchen with refrigerator and stove. Two large closets provide plenty of room for storage and clothes.

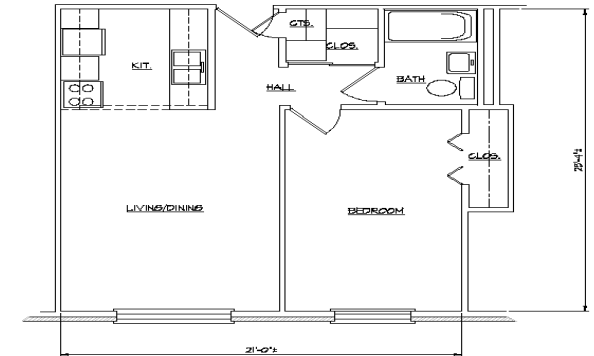
Dimensions: 14'-6" W by 23'-3"L



One Bedroom Apartment

Living/Dining Area, Separate Bedroom with closet, galley-style kitchen with refrigerator and stove. Four large closets perfect for linens, clothes, and extra storage space.

Dimensions: 21' W x 23'4"L



Studio Apartment 0-Bed

Living/Dining Area, Separate Bedroom space, galley-style kitchen with refrigerator and stove. Three closets for linens, clothes and storage.

Dimensions: 20'-6" W by 20'-6" L

